



The symbol above means that according to local regulations, product and / or its battery is not disposed with household waste. When you reach the end of its life, take it to collection points set by the local administration. The separate collection and recycling of the product and / or its battery at the time of disposal will help conserve natural resources and protect human health and the environment.

Copyright © EUROSEQUITUR,SL

This guide is protected by international copyright laws. It is not allowed to reproduce, distribute, translate or transmit any part of this guide in any form or by any means, electronic or mechanical, including photocopying, recording or storing in any storage and retrieval, without prior written permission EUROSEQUITUR, SL



AYAMA SEGUTEL

c/ Montserrat Roig, 18 - 08310 Argentona

(BARCELONA) Spain

Tel.: (+34) 937 974 759

www.ayama.com **comercial@ayama.com**



facebook.com/ayama



@ayama

PA20022A



See the declaration of conformity at

<http://www.ayama.com/declaration-of-conformity>

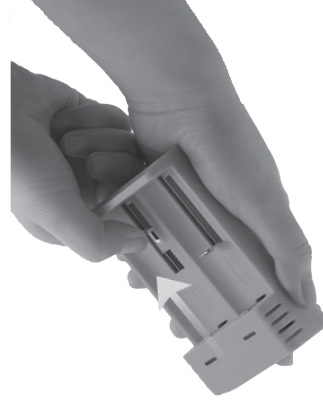


Precautions

Please do not handle the receiver while driving to avoid possible distraction. Do not disassemble or tamper with the receiver, it may cause damage and malfunction of the circuit. The receiver is not waterproof, protect yourself from heavy rain. Please clean the receiver with a damp cloth. Do not use alcohol, thinner or solutions such as benzene to clean it.

Charge the batteries

It is recommended to charge the battery before using for the first time. You can also use a computer or car cigarette lighter to charge the battery via the USB cable. Discharged batteries take 2 hours to fully charge.



1 Insert the batteries into the charger by extending the spring.

2 Connect the wall adapter cable to the USB port.



If you connect them incorrectly, it could cause damage to the batteries.

Warranty conditions - GENERAL CONDITIONS OF SALE

The manufacturer warrants that their products will be free from defects of workmanship for 3 years from the date of purchase, excluding from warranty that damage caused from delivery, misuse or normal wear and tear incurred during use.

- Warranty will neither include damage caused from electric discharge or inappropriate use of the material. Warranty will be void in case of external factors such as power surge or power fall, use of inappropriate or prohibited accessories, damage caused by accident, abuse, misuse, liquid contact, fire or inaccurate operation carried on by the final customer or third parties not authorized by the manufacturer.

- The responsibility of the manufacturer will be limited to substitute or repair the faulty parts during the warranty period. Under no circumstances the manufacturer will be responsible for damages or loss beyond the value of the equipment itself, the loss of animals, equipment or lost time.

- Similarly, the manufacturer accepts no judicial responsibility for malfunctions or accidents and everything that might arise directly or indirectly from the misuse of our materials, whether in warranty or not.

- During the warranty period, in case of return for repair, customers will have to make their own arrangements through any postal carrier and pay the freight. The manufacturer will send the goods back to the customer prepaying the shipment.

- Faulty products will be repaired or replaced according to the validity of the warranty. In case of claim, purchase invoice, original wrapping and manuals will be required.

- Warranty will be void in case of product opening or manipulation. In order to ensure the warranty validity, all repairs must be carried on by qualified staff from the manufacturer company.

- This warranty does not include the repair and replacement of products from other companies, nor replaceable parts such as antenna or lid. These products will only have the warranty offered by their respective manufacturer companies, as long as this subject had not been previously specified.

- In case of any malfunction, we advise you to contact our staff and not use the device in order to protect your animal's security.

MANUAL TUNING

We must pay the utmost attention to the pip, pip of radio tracking. If we hear “beeps” high and bass sounds, it will be indicating that the transmitter has moved in frequency due to causes such as temperature, aging, etc. To do this we will have to display the manual tuning screen.(TUNE)




Utilizar los botones de ganancia para desplazarnos

Technical characteristics


- Power supply: 6 volts.
- Receiver sensitivity: -146 dBm
- Autonomy: 12 hours
- Frequency band: EU /AUS/NZ (433.050-434.750 MHz)
- Operating temperature: -10°C to 50°C
- Storage temperature: -20°C to 70°C
- Protection index: IP50
- Weight (without antenna) : 138g
- Dimensions (without antenna): 130x66x21 mm

Overview



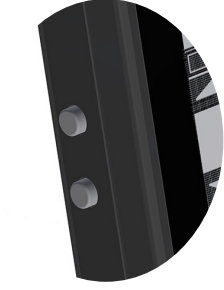
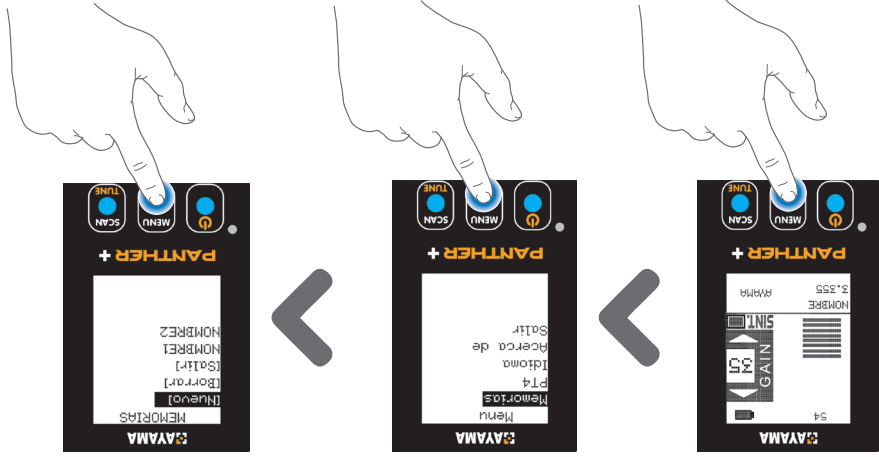
 **IMPORTANT:** Make sure the antenna is properly deployed.

Teclas

Key	Function
 ON/OFF	• Long press it, to turn on or turn off.
Menú / OK	• Menu, to access the functions, memories, ... • OK, to confirm options.
SCAN / TUNE	• SCAN, to go to the next memorized transmitter. • TUNE, to retune the transmitter frequency.

FIRST STEPS

The first thing we must do is add the transmitter we want to search for to the memories.



Use the gain buttons to scroll

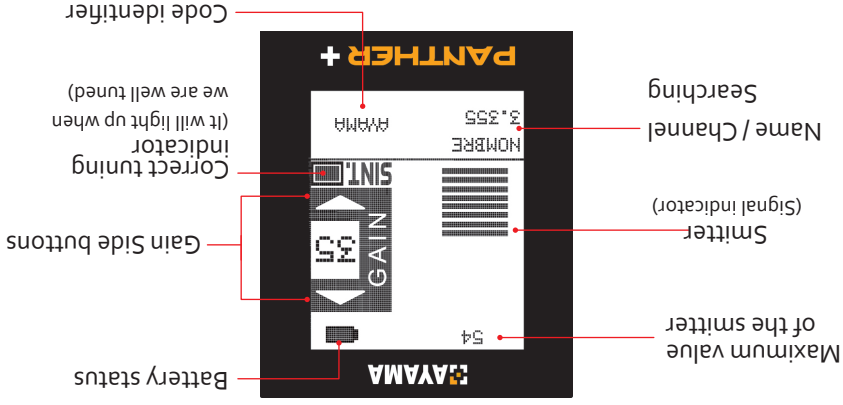


Select OK to start the automatic tuning of the transmitter.

IMPORTANT

The transmitter must be close to the receiver

MAIN SCREEN



Bottom info bar:

Transmitter information: It tells us which transmitter and channel we are searching for.

Code identifier: Shows the name assigned to the custom code.

POWER SIGNAL PT4 (listen for us)



PT4: Helps you find the transmitters far away, when the noise prevents you from hearing the beep, beep. The PANTHER+ is able to detect these weak signals and generates a louder beep.